



# Part List, HVC/Electrical

Applicable for Z200, Z208

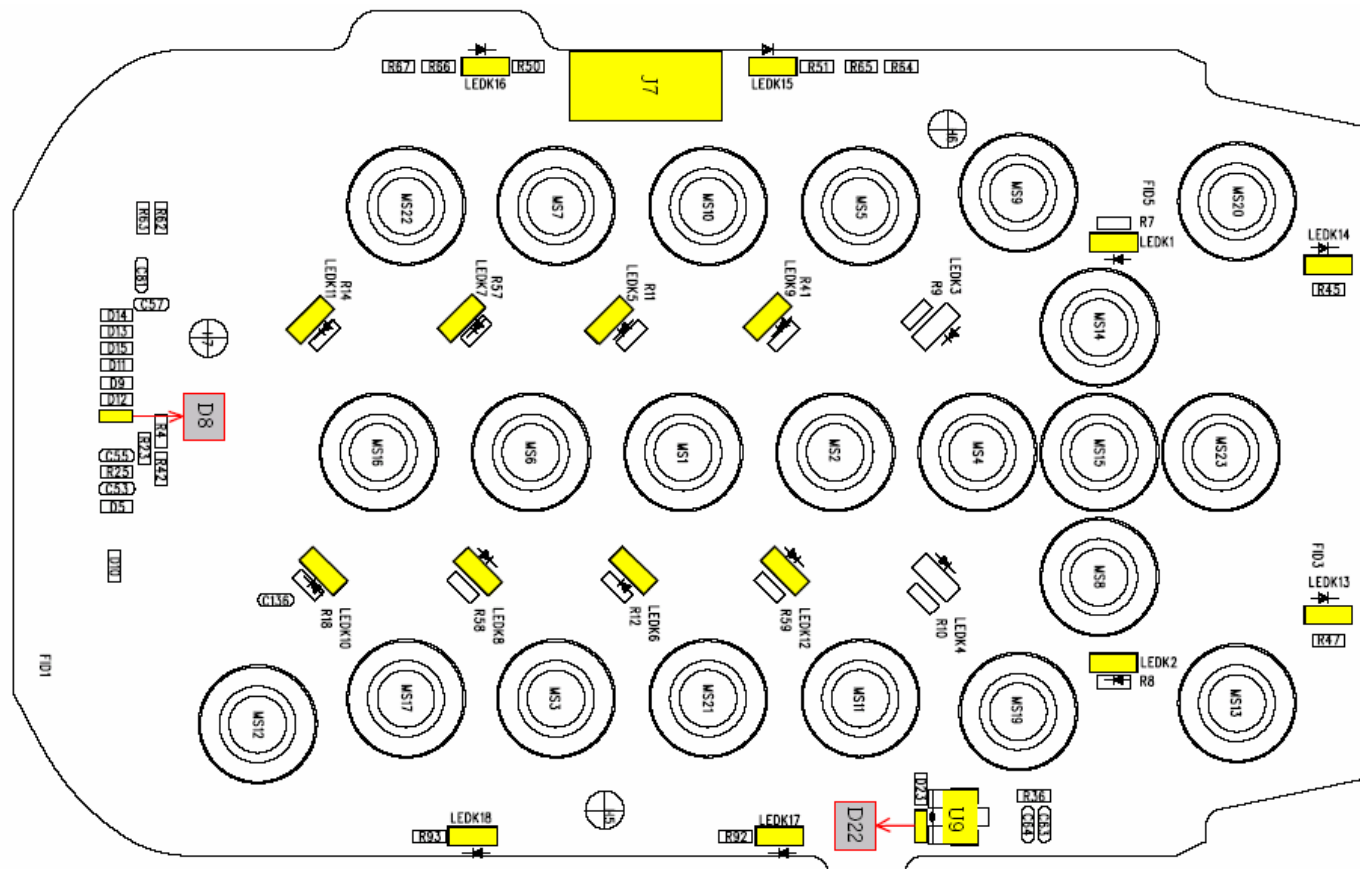
## Contents

|          |                                  |          |
|----------|----------------------------------|----------|
| <b>1</b> | <b>Mounting Drawing.....</b>     | <b>2</b> |
| 1.1      | Main board (Primary Side).....   | 2        |
| 1.2      | Main board (Secondary Side)..... | 3        |
| 1.3      | Z200 Parts list.....             | 4        |
| <b>2</b> | <b>Revision History .....</b>    | <b>5</b> |

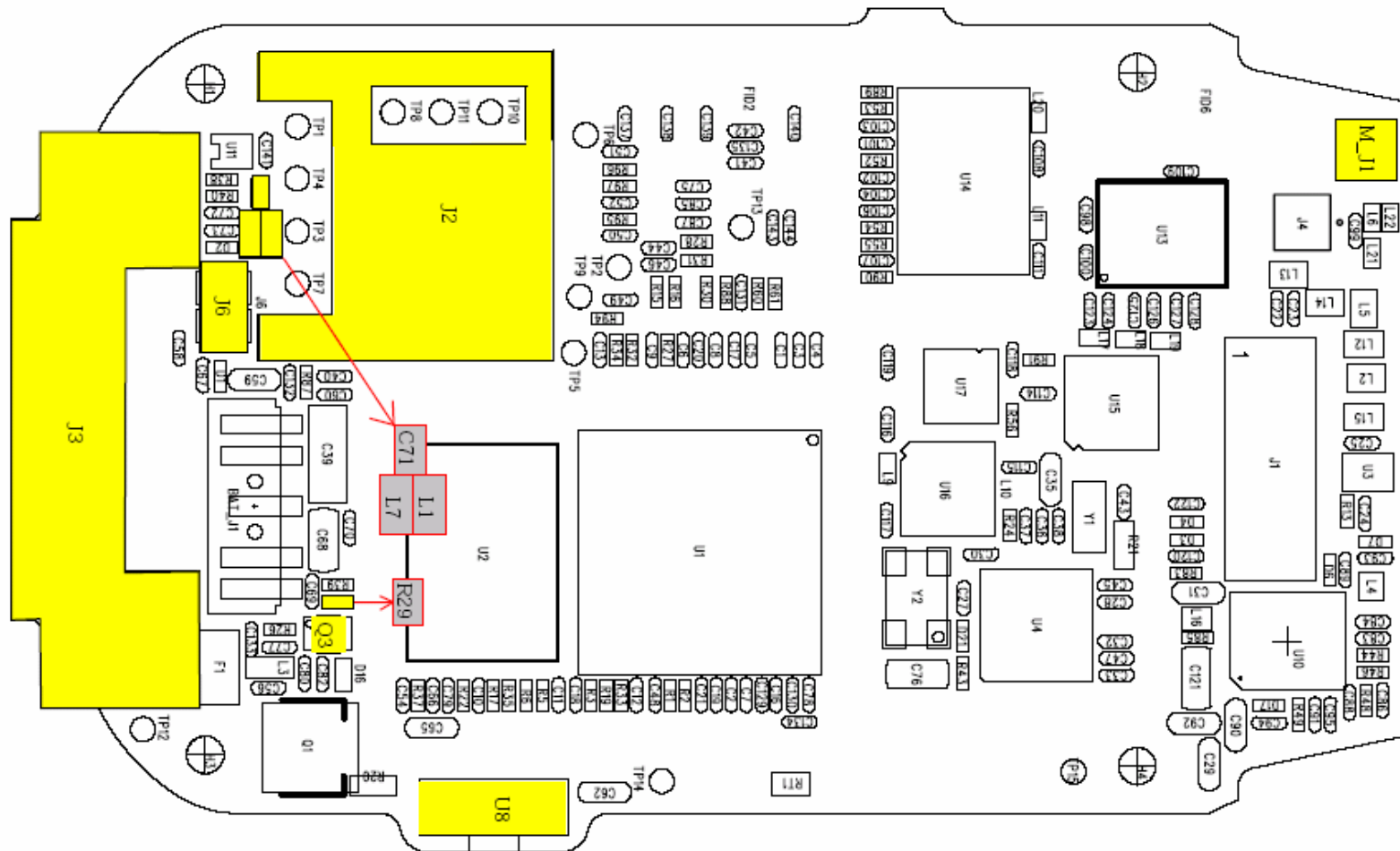
# 1 Mounting Drawing

The mounting drawings show the components position on the printed board.

## 1.1 Main board (Primary Side)



## 1.2 Main board (Secondary Side)





### 1.3 Z200 Parts list

The Part List contains only components that are possible to replace on the main board.

Pos. number refers to the components position number on the board.

Parts available to order will be found in the Web Shop.

| Pos.                 | Description          | Part Number      | Qty | Comments |
|----------------------|----------------------|------------------|-----|----------|
| LEDK1~2,<br>LEDK5~18 | Keypad Led           | A/1090511986601W | 16  |          |
| U8                   | IrDA                 | A/13210040000099 | 1   |          |
| U9                   | Hall sensor          | A/111DMLX9024H7B | 1   |          |
| M_J1                 | Antenna connector    | A/1142000101I451 | 1   |          |
| J2                   | Sim Reader           | A/1140340613B13U | 1   |          |
| J3                   | System connector     | A/1140661101893H | 1   |          |
| J6                   | Microphone connector | A/1141730201F628 | 1   |          |
| J7                   | Sidekey PCB          | A/1212200P0540A7 | 1   |          |
| L1, L7               | Inductor             | A/10342601108A09 | 2   |          |
| C71                  | Capasitor            | A/1020110353KA00 | 1   |          |
| R29                  | Resistor 1M ohm      | A/101011004EJA00 | 1   |          |
| D8, D22              | Varistor             | A/1321002000033E | 2   |          |
| Q3                   | Q3 Transistor        | A/11001848CD003Y | 1   |          |



## 2 Revision History

| Rev. | Date       | Changes / Comments               |
|------|------------|----------------------------------|
| A    | 2003-11-13 | First release                    |
| B    | 2004-03-03 | Components L1, L7, C71 added     |
| C    | 2004-07-28 | Component R29                    |
| D    | 2004-08-27 | Component D8/D22 Varistor added. |
| E    | 2005-09-08 | Component Q3 Transistor added.   |